

# Oracle Primavera P6<sup>®</sup> Fundamentals Courses



## Help your Project Management staff Succeed with **Primavera P6**

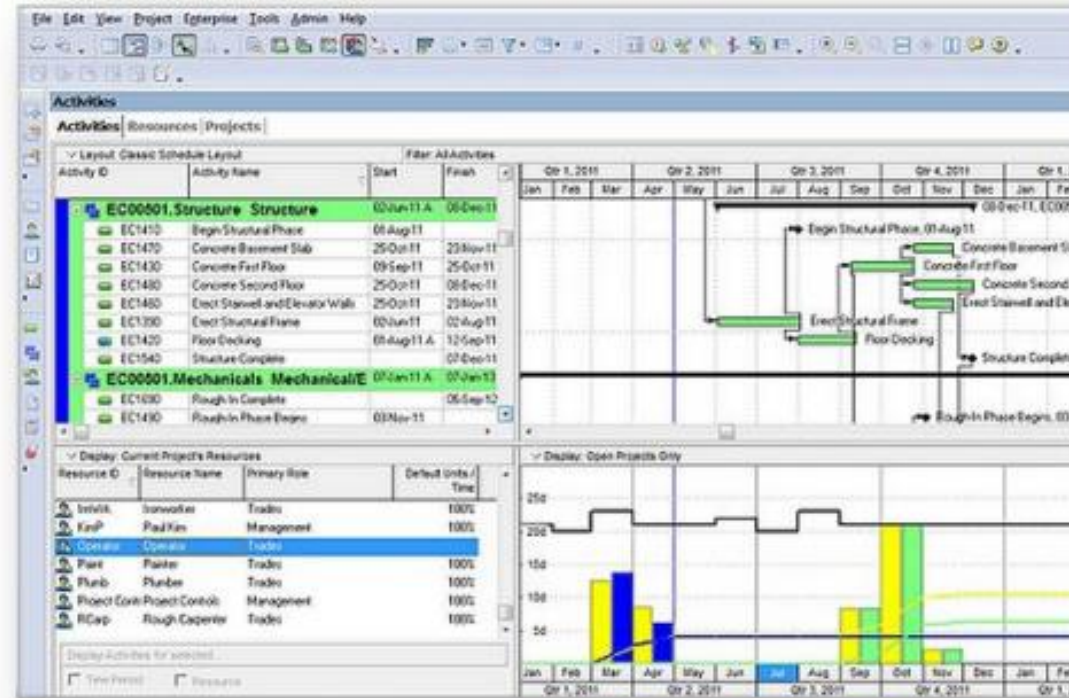
- \* Untrained or poorly trained users cost significantly more to support than well-trained workers.
- \* **41%** of employees at companies with inadequate training **plan to leave within a year** -- 88% of well-trained employees remain with their employer
- \* Cost to replace skilled employees -- anywhere from **US \$75,000 to \$450,000!**
- \* Average cost to recruit a professional candidate = **\$18,374.**



Primavera P6 has become the recognized standard in project management software for the world's complex and multi-faceted projects.

- ✓ Telecommunications
- ✓ Oil & Gas
- ✓ Construction & Engineering
- ✓ Power & Energy
- ✓ IT

**ORACLE®**  
**PRIMAVERA P6**



# The Primavera P6 Learner

Prior to 2010, almost 100% of Primavera P6 training was delivered in a classroom.

- \* Expensive
- \* Not Timely
- \* Low Learner Retention
- \* Not an Enterprise solution



## TOP 10 ELEARNING STATISTICS for 2013

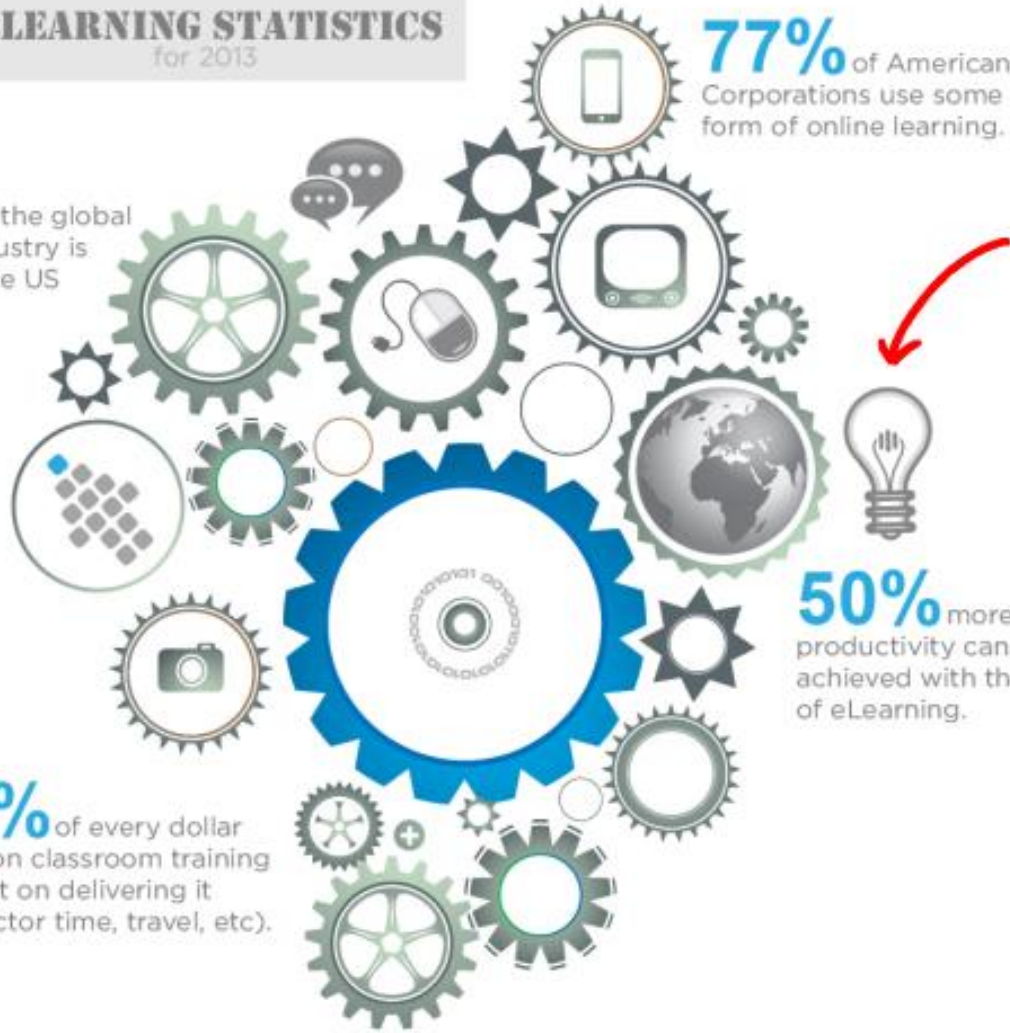
**70%** of the global eLearning industry is made up of the US and Europe.

**77%** of American Corporations use some form of online learning.

**85%** of every dollar spent on classroom training is spent on delivering it (instructor time, travel, etc).

**50%** more productivity can be achieved with the help of eLearning.

**Corporations save 50-70%** when they replace instructor-based training with ELearning.



# Self-Paced Video Courses

- \* Successfully build projects step-by-step in P6
- \* Sequential lessons provides a clear learning path to follow
- \* Answers to user questions are easy to find and live support is available
- \* Recorded in high-quality HD Video with professional production.



**Scheduling in Primavera P6**  
May 30, 2017 / Course  
Instructor: Michael Lopez

**Course Info:**  
✓ Applies to: Primavera P6 Professional v14.0, v14.0.1, Primavera P6 Optional Client  
Format: HD Video  
Prerequisites: an excellent completion of Introduction to Primavera P6 before this course

Lesson	Duration
<b>Introduction to CPM Scheduling</b>	<b>10m 54s</b>
1 - What is CPM Scheduling	4m 10s
2 - CPM Scheduling and Critical Path Example	15m 30s
<b>Scheduling Projects</b>	<b>16m 0s</b>
3 - Scheduling in Primavera P6	15m 30s
4 - Working with the PS Scheduler	15m 30s
<b>Critical Path and Project Deadlines</b>	
5 - Total Float and Project Deadlines	15m 30s
6 - Most Finish On Deadlines in P6	15m 30s
<b>Scheduling and Calendars</b>	
7 - Understanding Calendars in Primavera P6	15m 30s

Total Float and  
Project Deadlines



# A Searchable Library of How-To's

- \* Our one of a kind, step-by-step **tutorials** provide a detailed how-to on topics that don't fit in a course
- \* Global P6 experts have developed our tutorials to provide how-to's on intermediate-level and even the most advanced topics
- \* Our library is growing constantly as new topics are added monthly



## Create a Project Dashboard in Excel

04/20/12 | 12 | Primavera | Tutorial | No Comments | [View](#)

One of our previous site managers told us (the project control team), that if we bring to him another report that have more than 1 page, he will throw it away (sic)! Actually, managers care only about the big picture, and don't bother reviewing every small detail. The purpose of this tutorial is to [ . . . ]

[Read More »](#)



## Activity IDs in Primavera P6: Renumbering and Recoding with the help of Excel

04/20/12 | 12 | Primavera | Tutorial | No Comments | [View](#)

Introduction: It is always possible that we need to change all the Activity IDs in Primavera P6 and this task can be incredibly time consuming if we try to do it manually one Activity at a time. P6's has a feature called 'Renumber IDs' which can help to renumber IDs, but in many situations it [ . . . ]

[Read More »](#)



## Graphing a Resource S-Curve Graph in Excel

04/20/12 | 12 | Primavera | Tutorial | No Comments | [View](#)

Introduction: In my previous tutorial in this series, I described the procedure to export resource assignment data from P6 to Excel. Most of us have worked with Excel charts in our job or during our study in college or university. What we all know is that they are really helpful when you want to demonstrate some [ . . . ]

[Read More »](#)



## How to Export Resource Assignment Data to Excel from P6

04/20/12 | 12 | Primavera | Tutorial | No Comments | [View](#)

Introduction: As you know Primavera P6 has a lack of graphical features so often we schedulers need to export everything to other software packages (mostly Excel) to produce an understandable schedule and graphs. I always had a problem: exporting resource related data to Excel with the standard exporting feature on P6 used to sound like way to use the [ . . . ]

[Read More »](#)



## 4 Ways to Assign Activity Codes

04/20/12 | 12 | Primavera | Tutorial | No Comments | [View](#)

Activity Codes are one of the most important attributes which are very useful for partners and help them to

# Live Webinars

- \* Live Training Webinars are held **monthly** on various planning, scheduling and project management topics
- \* Guest presenters and experts occasionally will present on important topics
- \* Live sessions drive user engagement
- \* Learners can **ask questions live** at the end of each session





# Support



- \* Primavera P6 is challenging software to use - Learners receive help for complex issues.
- \* Our experts respond to support questions and provide solution via our [Support Forums](#)
- \* Learners can ask for help on
  - \* Course and Tutorial questions
  - \* Questions related to using P6 in their jobs
- \* Live Support via screen-sharing is available for Enterprises – additional fees will apply

## Course Description

The Primavera P6 Training Course will prepare you for efficiently track your project teams, schedules, tasks and finances manage your entire project and accurately report your progression to date. This instructor-led course presents the basic concepts of Oracle Primavera P6. You will create a project plan containing tasks, organize these tasks in a work breakdown structure containing task relationships, create and assign resources, finalize the project to implement the project plan and keep your projects on time and within budget.

# Course Agenda

## Day 1 Modules

### 1. Introduction

- Purpose
- Required Background Knowledge
- Purpose of Planning
- Project Planning Metrics
- Planning Cycle
- Levels of Planning
- Monitoring and Controlling a Project

### 2. Creating a Project Plan

- Understanding Planning and Scheduling Software
- Enterprise Project Management
- Understanding Your Project
- Level 1 – Planning Without Resources
  - Creating Projects
  - Defining the Calendars
  - Defining the Project Breakdown Structures
  - Adding Activities

- Adding the Logic Links
- Developing a Closed Network
- Scheduling the Project
- Critical Path
- Total Float
- Free Float
- Relationship Colors
- Constraints Types
- Project Constraints
- Activity Constraints
- Risk Analysis
- Contingent Time
- Formatting the Display – Layouts and Filters
- Printing and Reports
- Issuing the Plan
- Level 2 – Monitoring Progress Without Resources
  - Setting the Baseline
  - Tracking Progress
  - Corrective Action
- Level 3 – Scheduling With Resources, Roles and Expenses
  - Estimating or Planning for Control
  - The Balance Between the Number of Activities and Resources
  - Creating and Using Resources
  - Creating and Using Roles
  - The Relationship Between Resources and Roles
  - Activity Type and Duration Type
  - Budgets
  - Resource Usage Profiles and Tables
  - Resource Optimization
- Level 4 – Monitoring and Controlling a Resourced Schedule
  - Monitoring Projects with Resources
  - Controlling a Project with Resources

## **Day 2 Modules**

### **1. Group, Sort and Layouts**

- **Group and Sort Activities**
  - Display Options
  - Group By
  - Group By Options
  - Sorting
  - Reorganize Automatically
  
  - Auto-Reorganization
  - Set Page Breaks in the Group and Sort Form
  - Group and Sort Projects at Enterprise Level
  
- **Understanding Layouts**
  - Applying an Existing Layout
  - Creating a New Layout
  - Saving a Layout after Changes
  - Layout Types
  - Changing Activity Layout Types in Panes
  - Activities Window Layout Panes
  - WBS and Projects Window Panes
  
- **Copying a Layout To and From Another Database**
  
- **Workshop – Organizing Your Data**

## 2. Filters

- Understanding Filters
- Applying a Filter
  - Filters Form
  - Applying a Single Filter
  - Applying a Combination Filter
- Creating and Modifying a Filter
  - Creating a New Filter
  - One Parameter Filter
  - Two Parameter Filter
  - Multiple Parameter Filter
  - Editing and Organizing Filter Parameters
  - Understanding Resource Filters
- Workshop – Filters

## 3. Printing and Reports

- Printing
- Print Preview
- Page Setup