

Adobe
Photoshop CC
2020



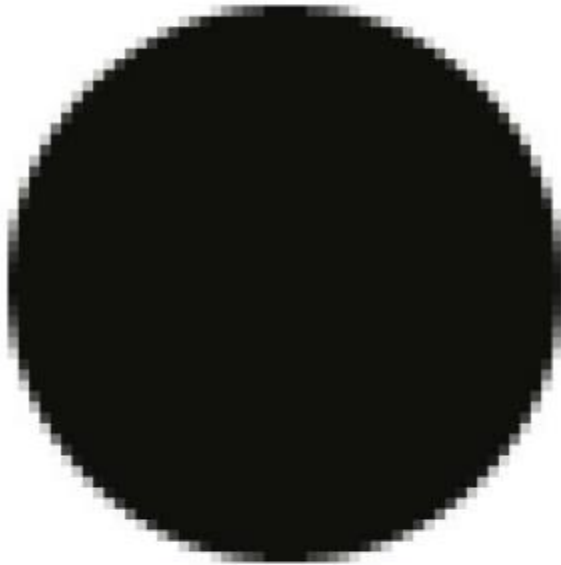
Workshop #1: **Down & Dirty with Adobe Creative Suite**

1
Photoshop

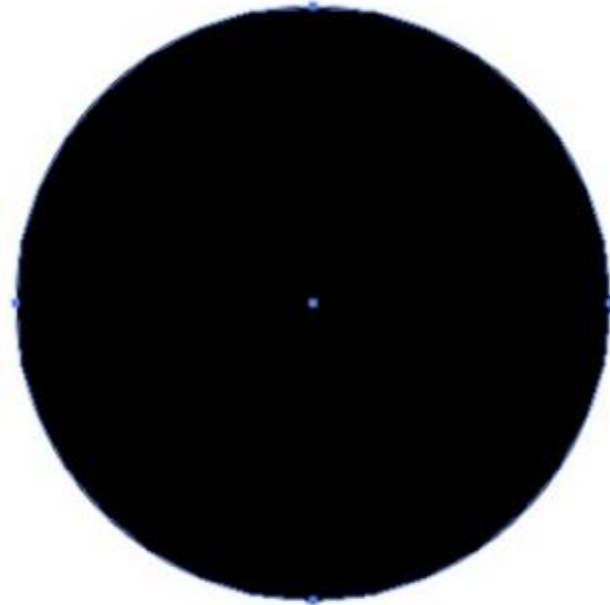
2
Illustrator

3
InDesign

Photoshop's primary purpose is to
edit and manipulate raster-based images.



In a **raster-based** program,
this circle is made up of
thousands of pixels.



In a **vector-based** program,
this circle is made up of a center point
and four outer points connected by edge lines.

Photoshop's primary purpose is to **edit and manipulate raster-based images.**

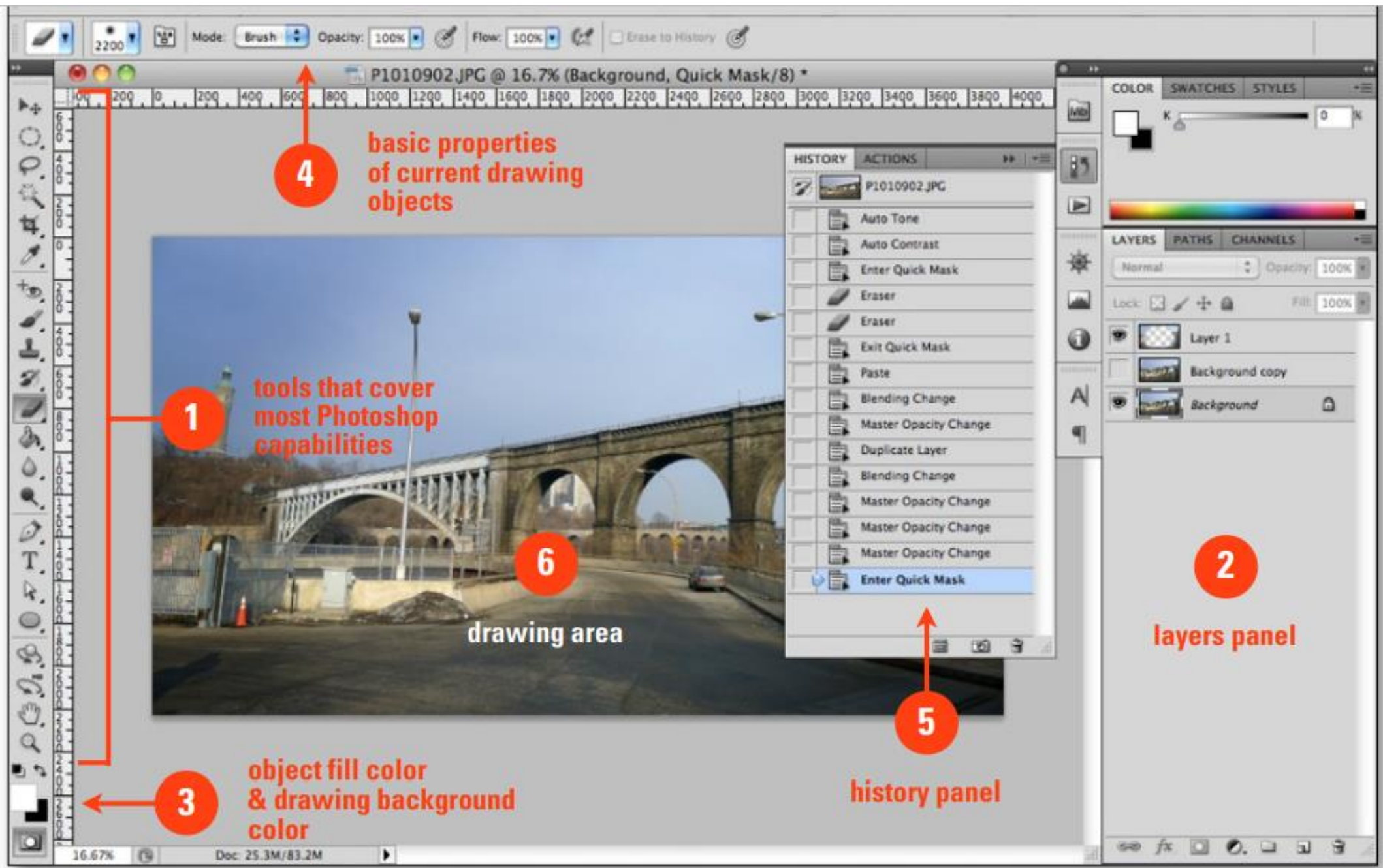


For example, you can easily **increase contrast** and **adjust coloring** to enhance photos.

Photoshop's primary purpose is to **edit and manipulate raster-based images.**



Photoshop can also be used to clip parts of images and create collages of multiple images.



4

basic properties
of current drawing
objects

1

tools that cover
most Photoshop
capabilities

6

drawing area

2

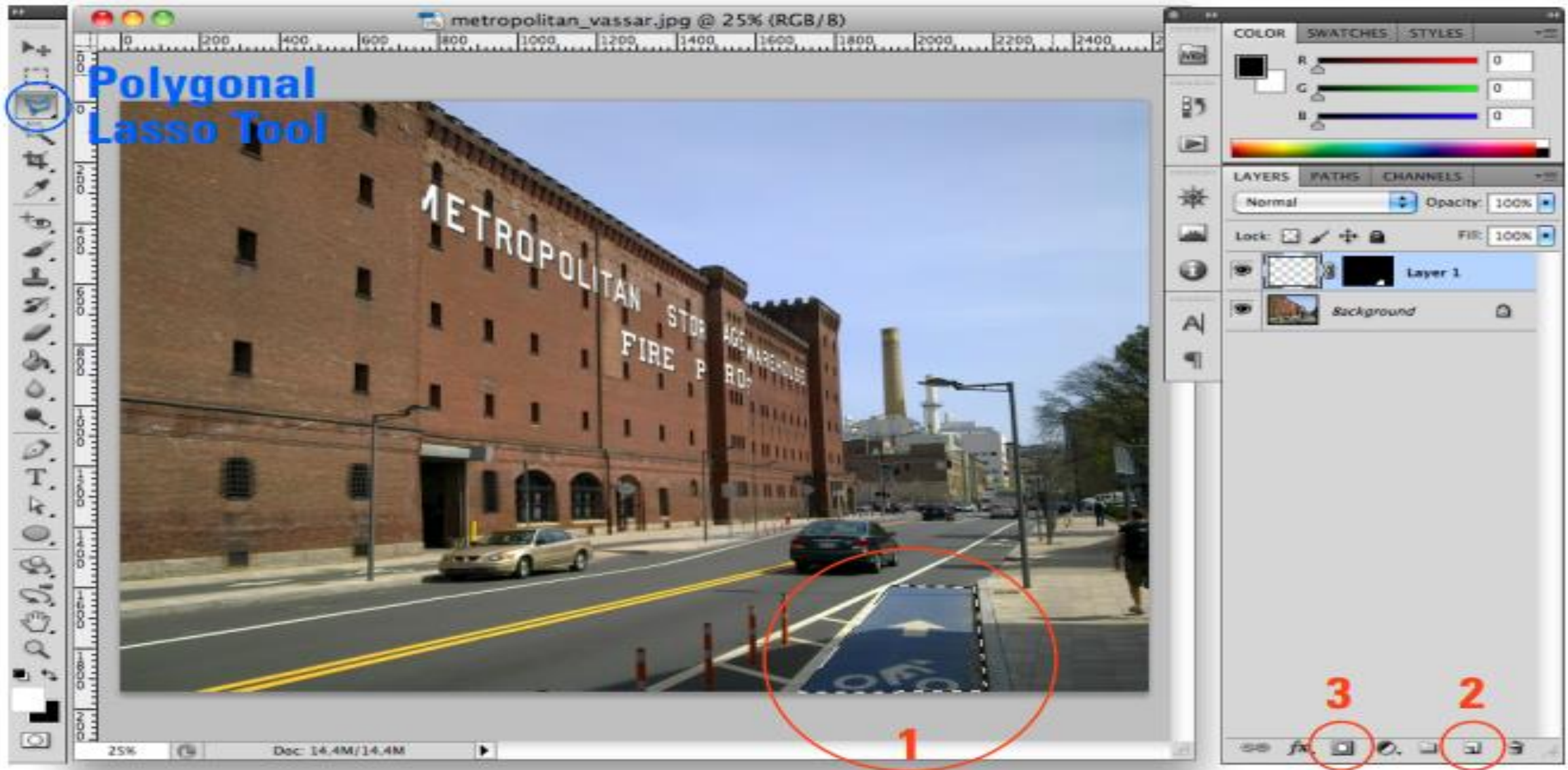
layers panel

3

object fill color
& drawing background
color

5

history panel

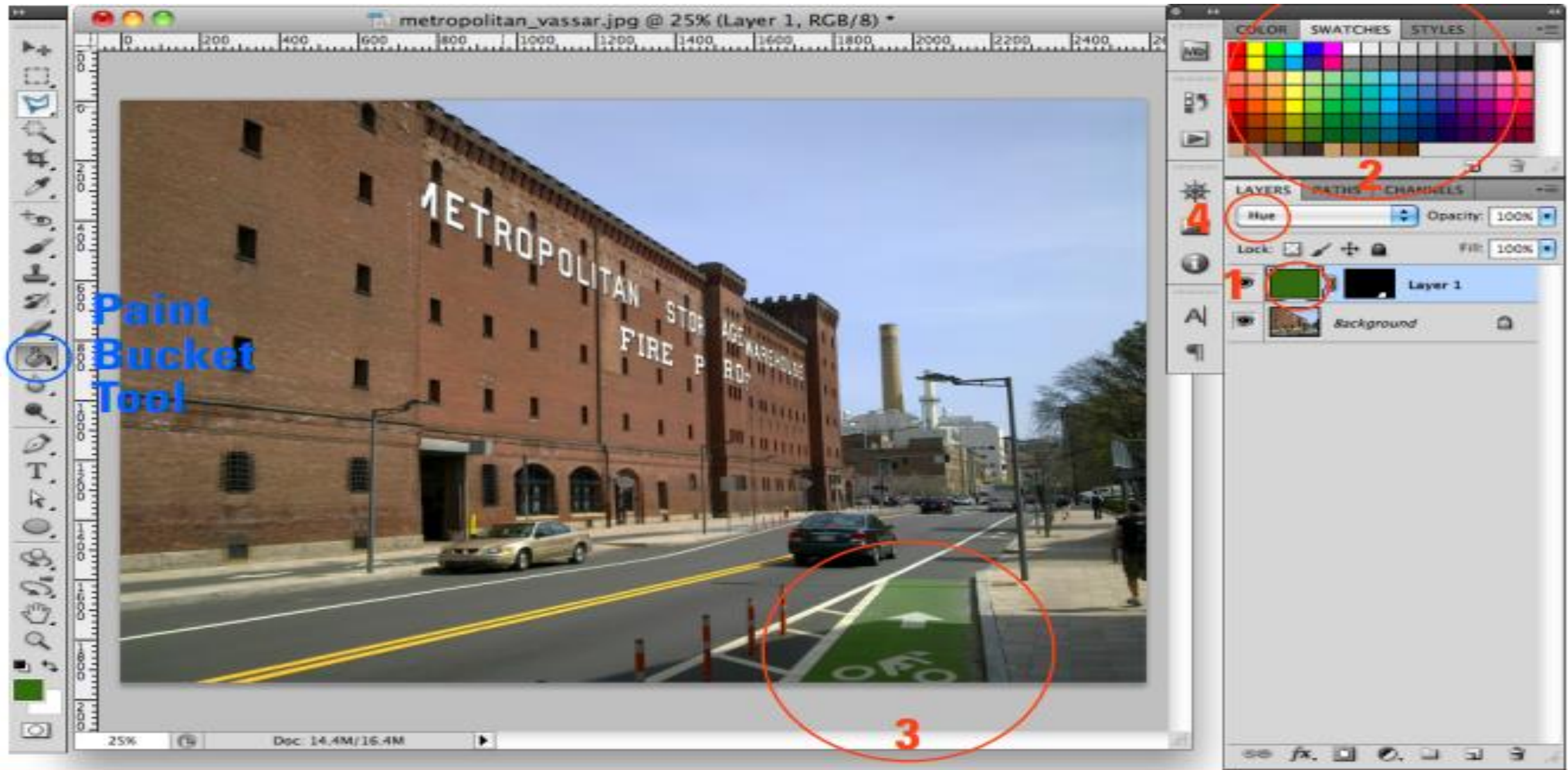


Photoshop Masking

1. Use the **Polygonal Lasso** tool to outline the bike lane.

2. Create a new **Layer**.

3. Add a **Vector Mask**.



Photoshop Masking

1. Select the **Layer Thumbnail**.

2. Select the **Paint Bucket Tool** and choose a color from the **Swatches** palette.

3. Apply the color to the masked area.

4. Change the **Layer Transparency** to **Hue**.

Clone Stamp Tool



2



4

3

1

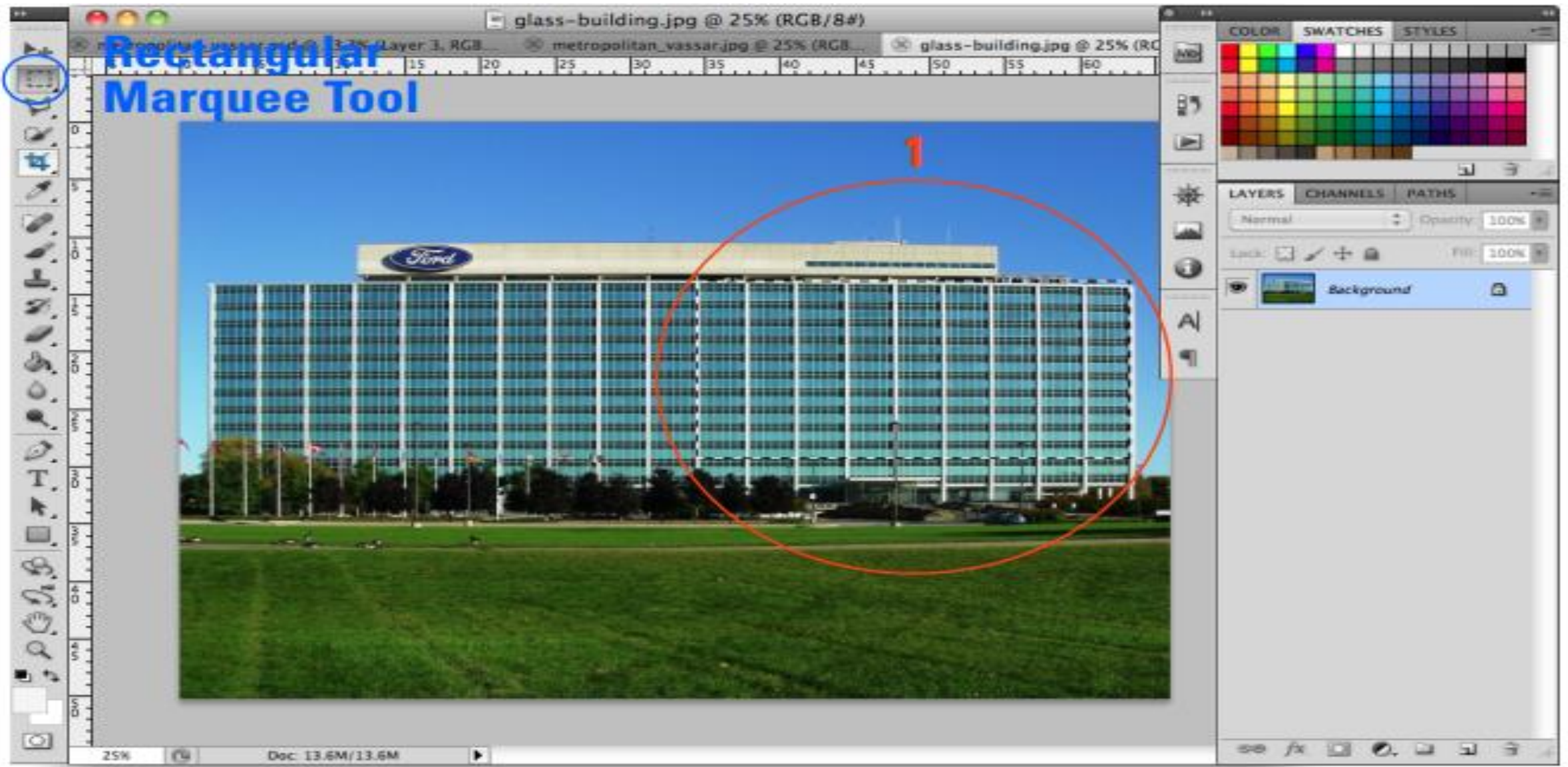
Photoshop Clone Stamp

1. Select the Background Layer.

2. Select the Clone Stamp Tool.

3. Set Target Area to 'clone' (copy) by Alt-clicking (Windows) or Option-clicking (Mac OS).

4. Click on another part of the building to create new window.



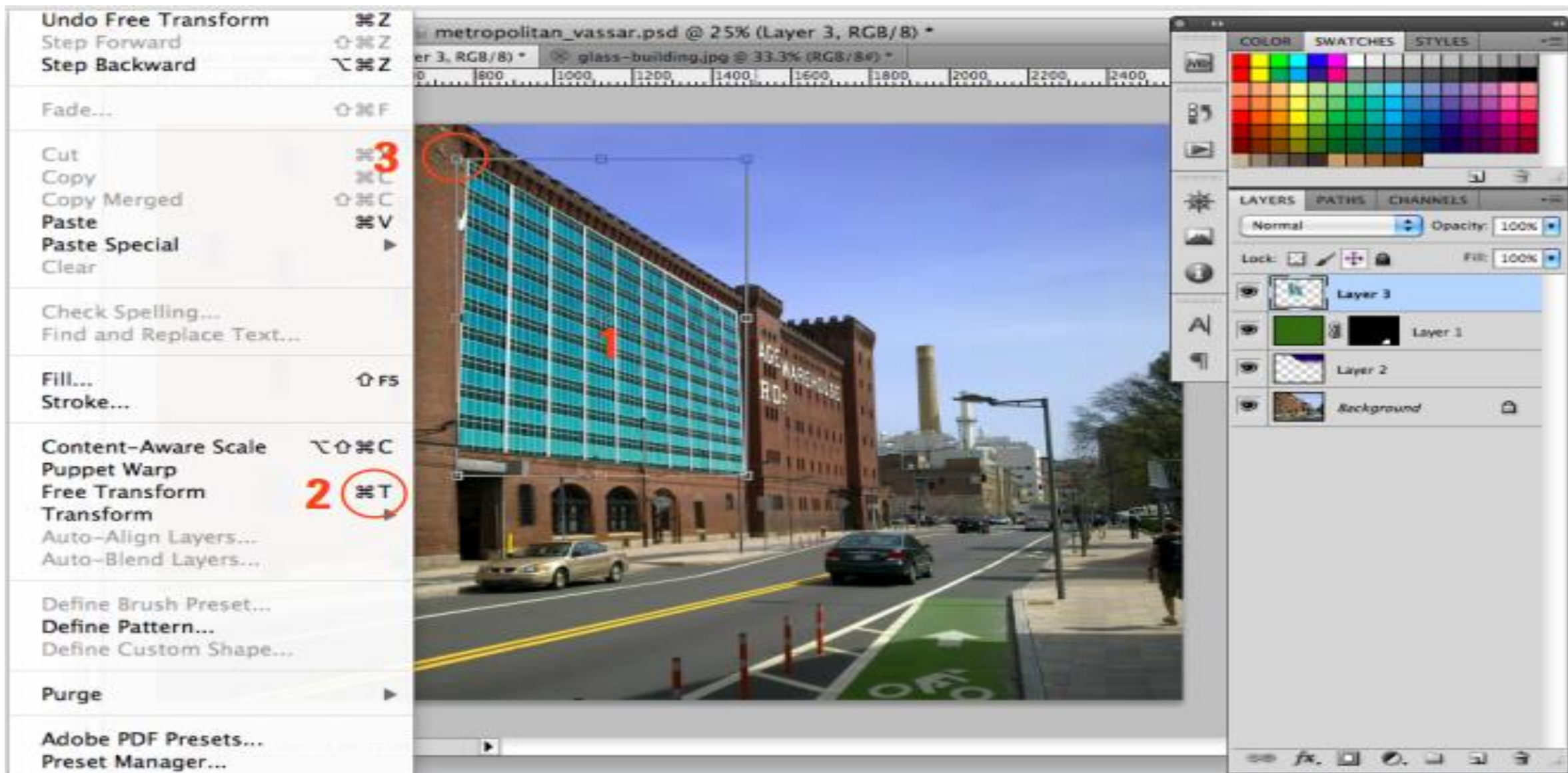
Rectangular Marquee Tool

Photoshop Selecting

1. Use the **Rectangular Marquee Tool** to select half the building facade.

2. **Edit > Copy** to your **Clipboard**.

3. To **Deselect**, hit **CTRL+D** (Windows) or **CMD+D** (Mac).



Photoshop Skewing

1. Edit > Paste the selected facade.

2. Select **Free Transform** from the Edit menu.

3. Skew the facade: hold **Command** and click-move each corner to match the perspective of the main building.



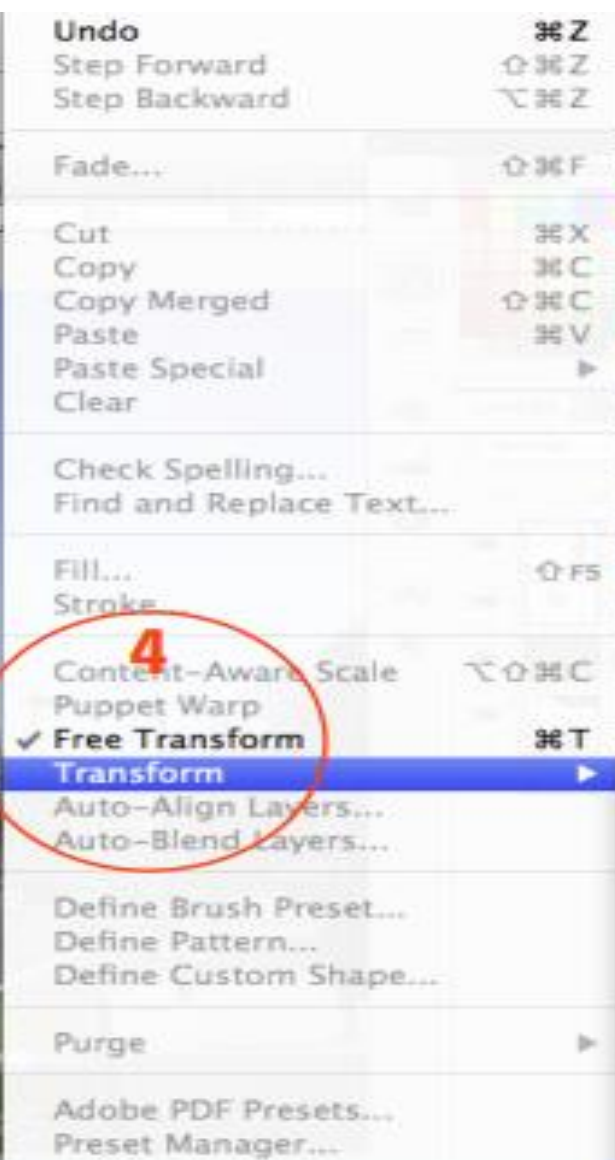
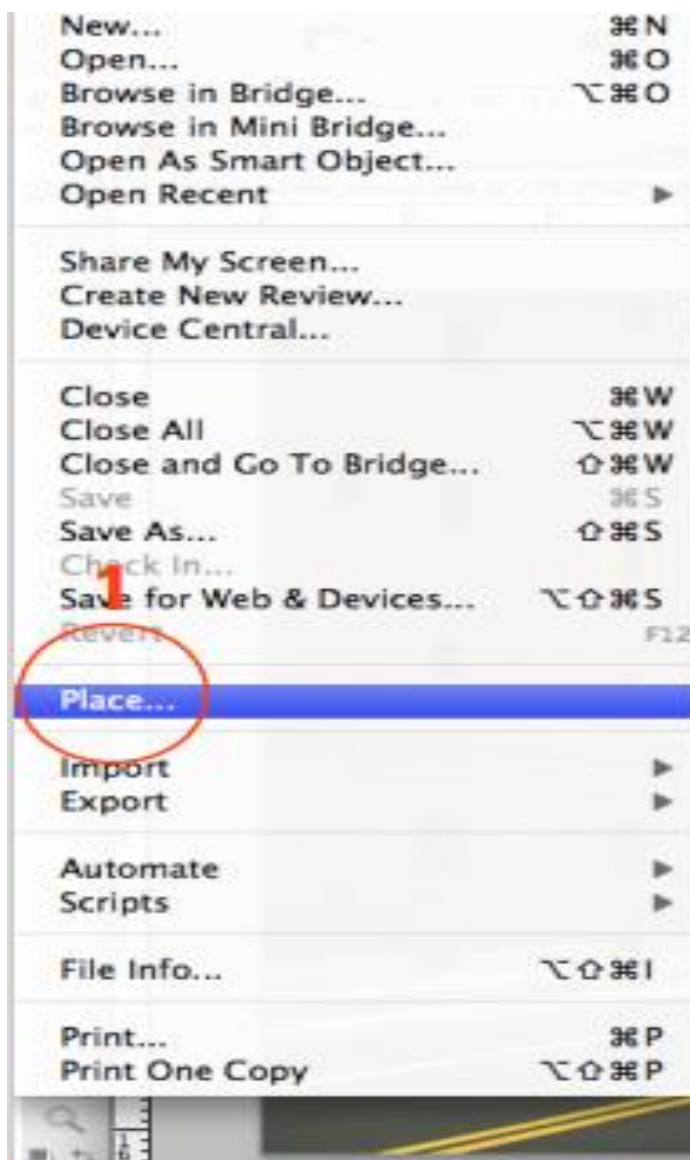
1. On the layers menu, right click on **Background** layer and convert using **Layer from Background...**

2. Use the **Eyedropper Tool** to select the black part of the image.

3. **Select > Color Range** to select the black area.

4. Decrease **Fuzziness** until full range of black is selected. Hit **OK**.

5. **Delete** the selected area and save as a PNG.



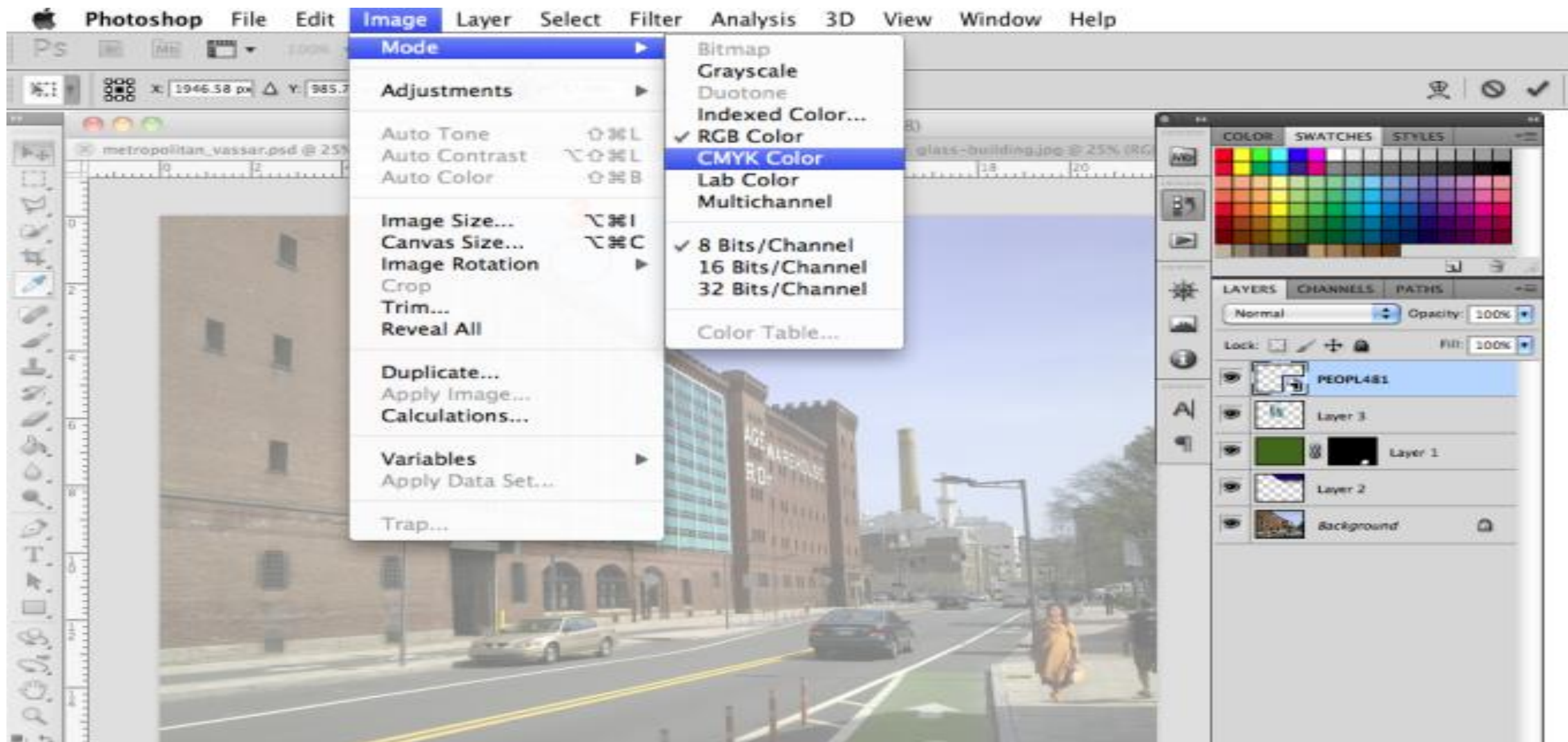
Photoshop Placing

1. **Edit > Place...** to find and add the file of the lady.

2. Select **Maintain Aspect Ratio** so her proportions remain intact.

3. Scale down by click-dragging a corner.

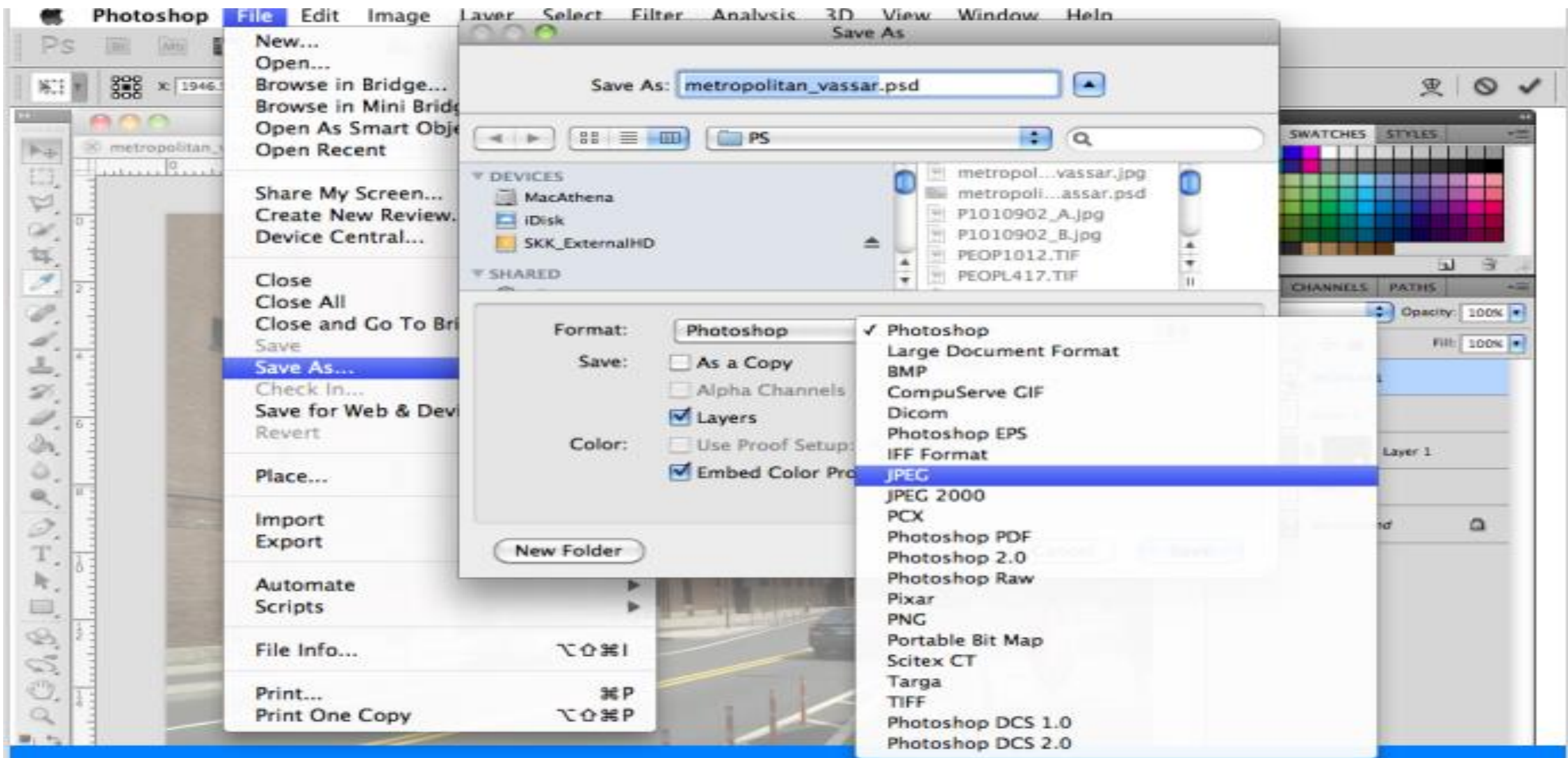
4. **Edit > Transform > Flip Horizontal.**



Photoshop Color Mode

1. Image > Mode

2. Select appropriate color mode: RGB or CMYK.



Photoshop File Saving

1. File > Save As...

2. Select appropriate Format.